



Brice Baxter, CGR, CAPPS
509.452.2464
www.baxterconstruction.net



category A

Baxter Construction, LLC

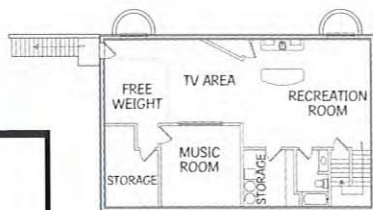
Baxter Construction, LLC, is excited to share their 7,600 square foot Colonial Farm style home, designed and built for the Baxter family. This home has seven bedrooms and seven baths along with many custom features to fit a large family. Baxter Construction, LLC, was voted Remodeler of the Year in 2007 and 2008, and People's Choice Award for remodeling in 2008. In showing this home our goal is to highlight our ability to do any type of custom remodel or addition. Baxter Construction plans to continue being a custom remodeler and restoration company.

The kitchen is an open concept that allows for traffic and flexibility. It has spacious granite countertops, 5' x 10' Island with seating, 4' commercial dual fuel stove, warming oven, and pantry with a baking prep counter making this kitchen the perfect choice for the holidays. Step back in time when you enter the library which has African mahogany cabinets integrated with exposed ceiling beams. The floor is hardwood with inlaid carpet, and there is also a rock fireplace with granite hearth and custom log mantel. The master suite is spacious and comfortable with a 10' ceiling that is trayed and backlit. You will also find a gas fireplace with intricate glass tile work, a walk-in closet with stacked washer and dryer, and a private deck. The deck is secluded by stone walls and landscaping to provide privacy in the hot tub and lounging area. The master bathroom showcases a custom tiled walk-in shower with multiple shower heads and glass block entry, soaker tub, heated floor, and custom cabinetry with granite countertops and accents. The basement is a playground for family and friends. Some of the highlights are 120" theater, bar, game area, slate floor and sound proof music room. The covered back patio is a fabulous outdoor getaway that features a gas fireplace, outdoor kitchen with granite, vaulted ceilings with hanging fans and a dining area. From this vantage point you can see Mt. Adams and Mt. Rainier as you look across the Yakima valley. At night, fire bowls and torches cast a glow across the pool, hot tub and fire pit while creating an atmosphere for relaxation.

We would like to thank all of the staff of Baxter Construction, LLC, who worked tirelessly to build this home. Further we would like to give special recognition to the following companies who co-labored with us in their specialized areas: Traditional Designs (Ron Pelson), Thunder Electric, Absolute Drain and Septic, Air f/x, Roscco Plumbing, Surfaces (Interior Design), Jeff Kassab Hardwood, K & K Custom Furniture (cabinets), Italstone, J's Custom Tile, CENCesational Painting, Katie Franke (Small Brush Custom Arts), Colonial Lawn & Garden, Rugged Class Waterfalls and Pools, My Home Theater, Thomas and Son Masonry, and Mansfield Alarm Company.

As you tour this home it is our hope that you will see the potential for transformation of your existing home. If you purchase a home that you would like to update, add on to or customize, keep us in mind for making your dreams come true.

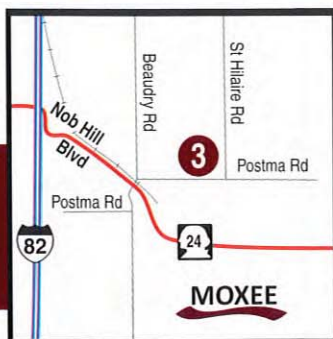
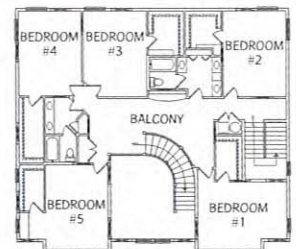
▶ Lower Level



▶ Main Level



▶ Upper Level



DIRECTIONS: From Nob Hill Boulevard head east. After crossing Interstate Highway 82 Nob Hill Boulevard will become State Route 24. Continue east on State Route 24. Turn left on Beaudry Road. Just after crossing the railroad tracks turn right on Postma Road. Turn left on St. Hilaire Road. The home is located at 2790 St. Hilaire Road.