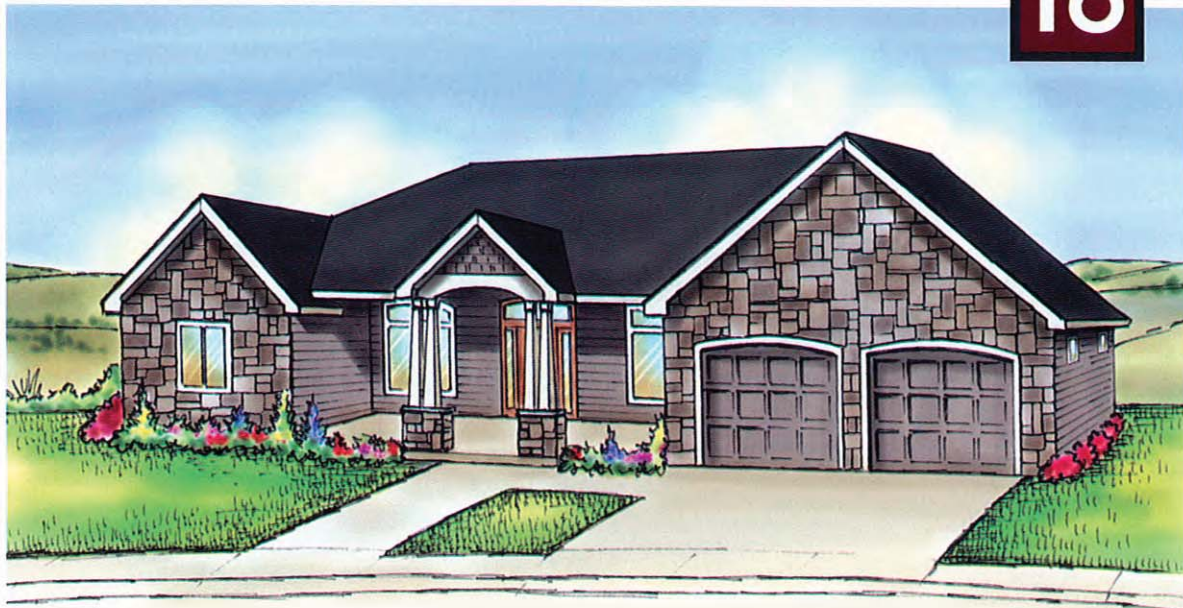


Richard W. Goodall
509.910.2202
www.rascontracting.com



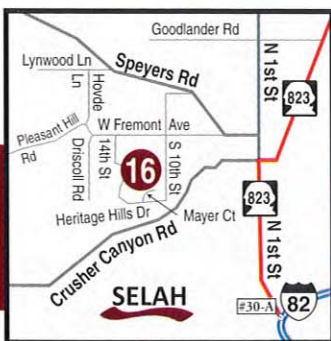
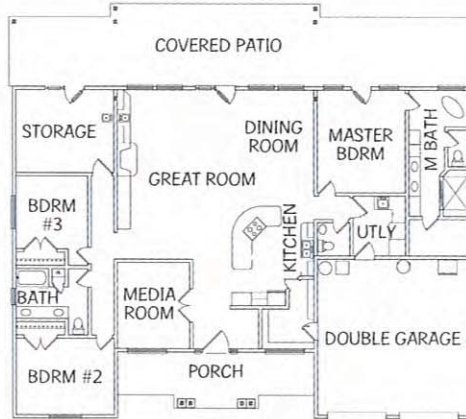
CHARL LADD

category c

R.A.S. Contracting Corp. ◀

R.A.S. Contracting Corporation welcomes you to the panoramic views of the Selah Valley from our 2009 Tour Home. This single story 2,612 square foot home is located in Selah's most upscale neighborhood, Heritage Hills. The modern floor plan includes an open concept with 10-foot ceilings, media room and transom windows. The kitchen, which is open to the great room and dining room, is designed for efficiency and entertaining. The final touch is the rear covered patio which makes you feel like you are suspended in space. We wish to thank Mike and Myria Foisy for allowing us to show their beautiful home.

► Main Level



DIRECTIONS: From Interstate Highway 82 westbound take exit #30-A into Selah. Continue through downtown Selah and turn left on Fremont Avenue. Continue up the hill on Fremont Avenue and turn left South 10th Street. South 10th Street will turn into Heritage Hills Drive, follow it to the top of the hill and turn right on Mayer Court. The home is located at 1101 Mayer Court.