

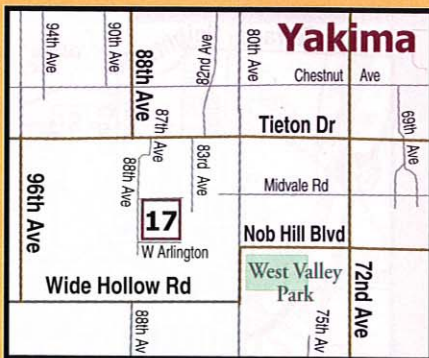


8507 West Arlington, Yakima, WA

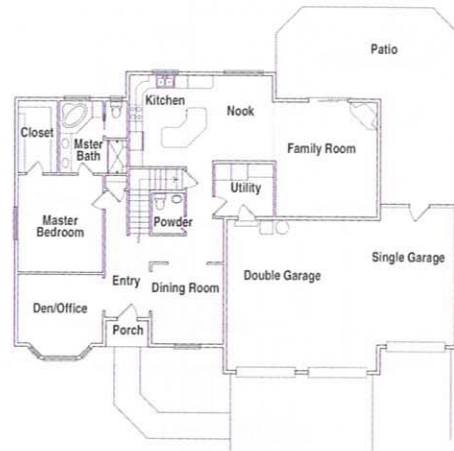
With four bedrooms, this plan offers it all – space, efficiency and flexibility. From the large foyer, the dining room, main hall and open stairway invites one to come in and enjoy life. The traditional dining area features a convenient kitchen service hall, making it great for entertaining with the powder room located in the main hall leading to the kitchen. The kitchen features a beautiful slab granite topped center island/eating bar and eating nook. Adjacent to the nook, the family room opens up with a cozy gas fireplace and leads to the large back patio great for entertaining and family gatherings. From the large utility room, you access the three-car garage, making it perfect for storage and unloading the groceries. At the top of the stairs there are three bedrooms, a full bath, linen closet and a large bonus room set up as a home theater for family and friends to enjoy. The master suite, located on the main floor, provides privacy and convenience for the homeowner. The suite includes a large walk-in closet with custom shelves, a huge bathroom with double sink vanity, a separate shower as well as a garden tub. The exterior of this home is lovely, featuring landscaping and a privacy fence surrounding the back yard with automatic underground sprinkler system to make maintaining the complete yard an ease.

Features:

- 3-car garage
- Garage man-door
- Master suite on main floor
- Master suite walk-in closet
- Master bath garden tub
- Master bath separate shower
- Master bath double sink vanity
- Kitchen island with slab marble
- Kitchen includes beautiful custom cabinets and marble tile counter tops
- Kitchen eating nook
- Kitchen pantry
- Stainless steel appliances
- Formal dining room with indirect lighting
- Great room fireplace
- Laundry cabinets
- Laundry counter with deep sink
- 2nd bathroom tub/shower combo on 2nd floor
- Home theater room upstairs in bonus room
- Powder room on 1st floor
- Coat closet
- Foyer
- Linen closet
- Rear patio
- Completely landscaped and fenced



Directions: From Yakima, take Tieton Dr. West to S 87th Ave. and turn left. As you follow S 87th Ave. it will veer right and become McLaren Ave. then veer left and become S 88th Ave. Continue down 88th Ave. and turn left on Arlington. The home is located at 8507 W. Arlington.



Main Floor



Upper Floor



Doug Hughes
507-457-4233

www.dhconstructioninc.com

